



3, Carretera Alotenango, Alotenango, Alotenango, 03014, ANTIGUA AREA, Sacatepequez

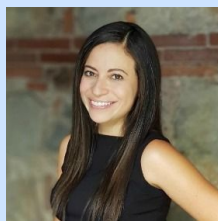
Large extension of land for sale on the major highway leading to La Reunion / Highway 14. The land has very little inclination and has a wide front that measures 80mts. It has coffee plants at the moment but would be perfect for developing into a residential complex, convenience store, gas station, or just to have a beautiful farm. The total measurement is 42,000 Vrs or 33,540.63 mt2.

Large extension of land for sale on the major highway leading to La Reunion / Highway 14. The land has very little inclination and has a wide front that measures 80mts. It has coffee plants at the moment but would be perfect for developing into a residential complex, convenience store, gas station, or just to have a beautiful farm. The total measurement is 42,000 Vrs or 33,540.63 mt2. Please call Karina to set up an appointment to view.

AREA INFORMATION:

Lot : 33540.63

CONVENIENCE:



Name	Marian Cordova-Wilson
Address	4a Calle Oriente No. 44 , Antigua, Guatemala, Antigua Area
Phone	502-7965-2641