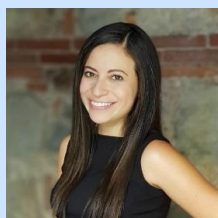




Gated Community, San Pedro el Alto, ANTIGUA AREA

This is a flat lot with unobstructed views of all volcanoes. Ready to build, It has all services water, sewage etc.

The lot is 30 x 53. Be sure to include this property in your must see list as it offers exceptional value. Please contact us to schedule a viewing.



Name	Marian Cordova-Wilson
Address	6 Calle Poniente #39, Antigua, Guatemala, Antigua Area
Phone	502-7832-1975

AREA INFORMATION:

Frontpage	: 30
Depth	: 53
Varas	: 2269
Lot	: 1583

CONVENIENCE:

General Amenities: Volcano View,
Security Amenities: Gated Community,

NEIGHBORHOOD:

Banks	: 10 minutes by Car
Local	: 10 minutes by Car
Restaurants	
International	: 70 minutes by Car
Airport	
Bus Stop	: 5 minutes by Walking
Antigua's	: 10 minutes by Car
Central Park	